

WILLAMETTE VALLEY



WILLAMETTE
VALLEY WINE

From Portland to just south of Eugene, the Willamette Valley appellation stretches more than 100 miles long and 60 miles wide at its widest point. Bordered by the Coast Range Mountains to the west and the Cascade Range to the east, the valley is approximately 50 miles from the Pacific Ocean. The soils of the nine nested appellations range from marine sedimentary to basalt to windblown loess. The mild climate provided by the maritime winds gives the region a long, moderate growing season.

Region

45,000 acres of growing area
9 nested appellations

Production

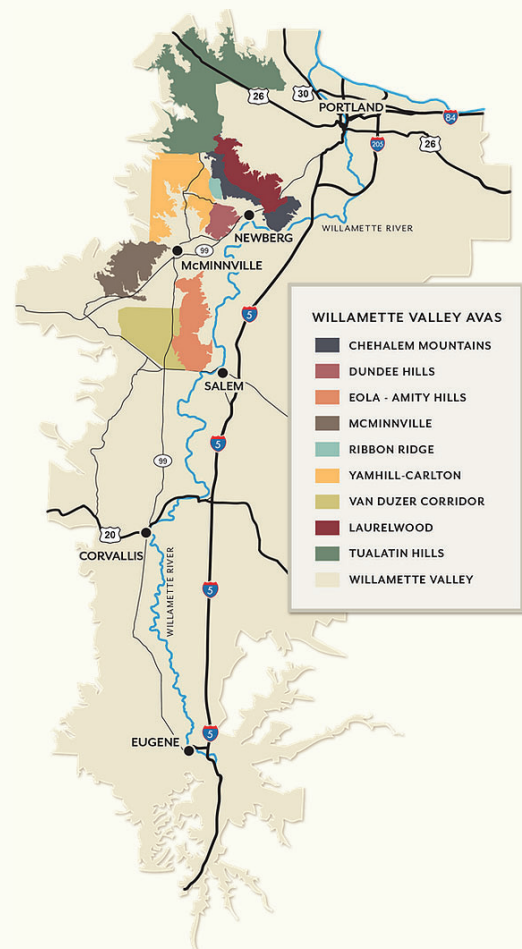
73,560 tons produced (2019)

People

877 vineyards
676 wineries

Primary Grape Varietals

Pinot Noir
Pinot Gris
Chardonnay
Syrah



For more information, visit www.willamettewines.com or follow @willamettewines on Facebook and @wvines on Twitter and Instagram.

